

## POLISHED ROD ACCESSORIES

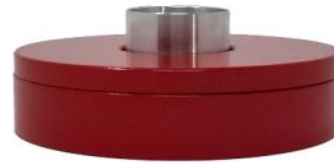
### Polished Rod Lubricator

- Lubricates the polished rod reducing friction
- Extends stuffing box packing life
- Can be utilized with any stuffing box
- 1quart reservoir
- Replaceable wicks, specify size when ordering
- Available for all polished rod sizes
- Single completion application



### Levelling Plate

- Minimizes polished rod breaks
- Installs under rod rotator
- Compensates up to 2 degrees of misalignment of the carrier bar in any direction
- Ensures uniform engagement between polished rod clamp and carrier bar
- Available for all polished rod sizes



### Rod Rotator Retro-Fit Kit

- Upgrades S302 & S302SG from ratchet pawl design to one way bearing
- Simplifies rotator mechanics
- Increases run times
- Reduces downtime and maintenance costs
- Proven Reliable Performance
- Simple conversion
- \*Kit includes backstop nut, actuator nut and one-way bearings



## POLISHED ROD CLAMPS



### Figure Clamps

- Indention Style
- Individually hinged segments, bolts can be individually torqued
- Available in standard polished rod sizes
- Steel body material
- Heat treated 4140 steel hinge pins
- Phosphate coated for corrosion resistance
- Compact design
- Small rotating diameter

Specifications	S-10S Series 1 Bolt	S-10D Series 2 Bolt	S-10T Series 3 Bolt
Rated Load	13,000 lbs.	26,000 lbs.	40,000 lbs.
Polished Rod Size	1-1/4", 1-1/2"	1-1/4", 1-1/2"	1-1/4", 1-1/2"
Recommended Maximum Bolt Torque	250 ft-lbs.	250 ft-lbs.	250 ft-lbs.
Rotating Diameter	5-3/4"	5-3/4"	5-3/4"
Body Material	Forged Steel	Forged Steel	Forged Steel